

CAPT

Combined Arms Planning Tool



The Combined Arm Planning Tool (CAPT) is a Tactical Plan Evaluator (TPE) that trains the planning skills required of a Company Fire Support Team (FiST) Leader and supports the training of a portion of the Fire Support Coordination Center (FSCC).

DESCRIPTION

Given a scheme of maneuver including assault support lifts, the User enters maneuver element direct fires, Fixed Wing and Rotary Wing Close Air Support (CAS) aircraft attacks along with artillery, mortar, and naval surface fires. The tool then evaluates all fires based upon SME defined doctrinal rules for feasibility, effects, timing, and safety. Should a rule violation occur, the tool recommends corrections to the User through embedded PDF help files.

CAPABILITIES

Interactively Trains Personnel to Create a Fire Plan in Support of a Maneuver Company's Scheme of Maneuver. Checks Both Direct and Indirect Fires Against SME Defined Rules for:

- Feasibility
- Effects
- Timing
- Safety

Identifies Rule Violations

Recommends Solutions

Quickly Re-Checks Plan

TRAINING SUPPORT

In an effort to help our warriors meet the objectives of PTP Phase IV: Conduct of Offensive Combat Operations and other related campaigns, the CAPT system supports the Expeditionary Warfare School through:

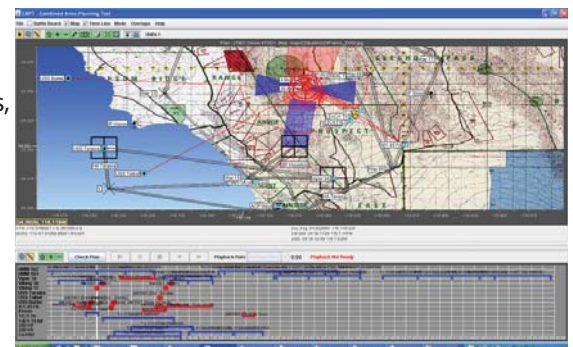
- Marine Corps' Career Captain Course
- Resident and Non-Resident Instruction
- Facilitating the understanding of Fire Support by all officers
- Improving Company Level Fire Planning Skills
- Performing the Planning Functions of the Company Fire Support Team (FiST) Leader
- Increasing the utility of the Fire Support Coordination Application Course (FSCAC) at MCAGCC 29 Palms with more application and less concept instruction

The User can observe both the scheme of maneuver and the fire plan's execution at up to 50 times real time in a highly interactive manner. The CAPT also supports LVC combined arms exercise After Action Reviews (AAR) by offering a two dimensional display of the Exercise Force's Plan for comparison to the ground truth data collected during the plan's execution.

Point and Click Maneuver and Fires Data Entry

Displays the Fire Plan On:

- Map with Temporal Gun Target Lines, Minimum Safe Distances, Flight Paths, Enemy and Friendly Locations, Threat Rings, and more.
- Battle Board with Friendly Unit and Target Data, Fixed Wing and Rotary Wing 9 Line Brief Information, Time on Target, and more.
- Scheduling Worksheet with a Dynamic Time Indicator at up to 50 Times Real Time Permitting: Pause, Stop, Reverse, and Resume.



Program Manager for Training Systems POC
Brad Valdyke
407 982-5660
brad.valdyke@usmc.mil

USER DEFINED RULES

& TOPICS ADDRESSED

CAS Flight Paths and GTLs

- Time / Altitude Separations
- Trajectories for Indirect Systems
- Times of Flight
- Attack Geometries (FAH/FAC/Offset)
- Stay Above Altitude
- Time on Target (TOT)
- Fixed and Rotary Wing
- Holding Areas and Battle Positions
- Missiles / Rockets / Guns / Bombs

Minimum Safe Distances

- Weapon Dependent

Redundant Marks

- Multiple Platforms Required
- WP and Illum on Deck
- Timing and Quantity

Suppression of Air Defenses

- Standard Continuous
- Standard Interrupted
- Non-Standard

Suppression in Threat Rings

- Range Dependent
- Maneuver Unit Speed

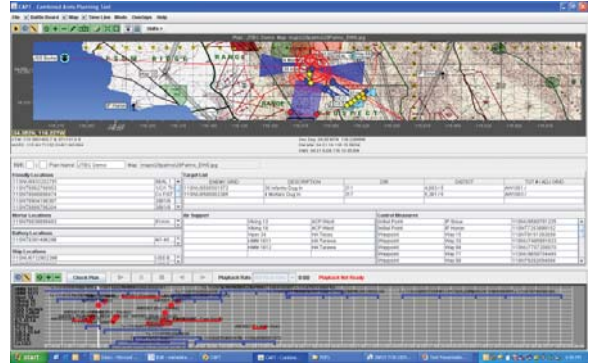
Surface Danger Zones

- Weapon Dependent

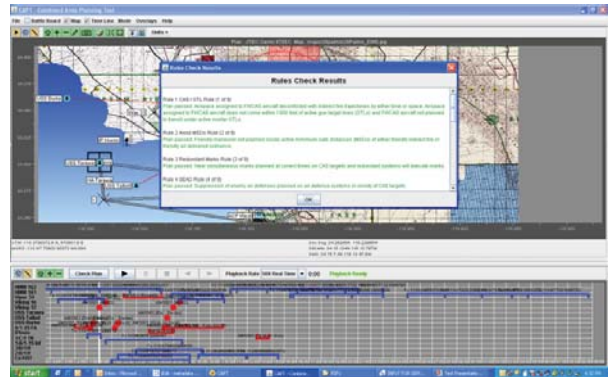
Maneuver and Mortar GTLs

- Active GTLs Influence Maneuver

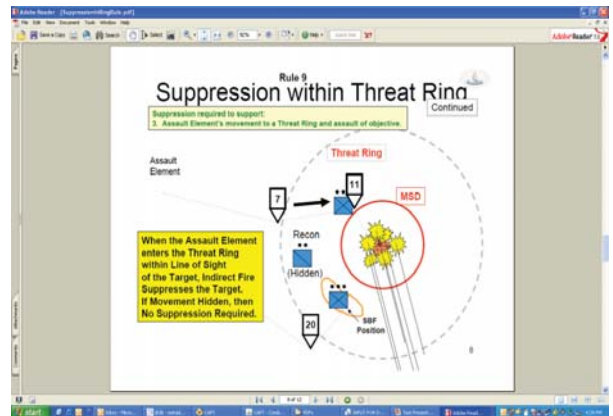
INTERACTIVE DISPLAYS



FiST Battle Board



Initial Plan Evaluation
Plan Stops at Error during Playback



Error Correction Help Files



MARCORSYSCOM
PM TRASYS

12350 Research Parkway, Orlando, FL 32826-3275
Voice: 407 381-8762, DSN: 960-8762, Fax: 407 381-8807
PMTRASYS@usmc.mil

